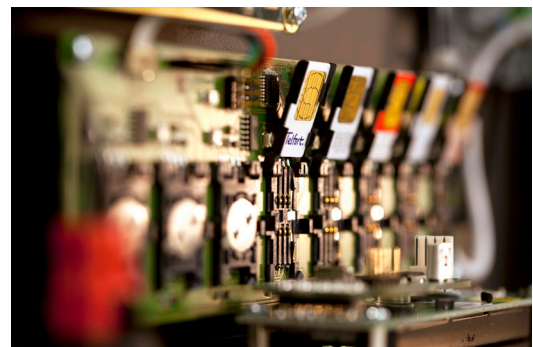




Increase availability!

In Europe there're still many places without a 3/4G network. The SigQ 7 has been developed to increase availability. By combining two or more 3G/4G modems with a VSAT connection a maximum availability of the Internet will be realized. As soon as the connection with the 3/4G network has been loosen the SigQ 7 automatically switches over to the VSAT. Users can browse and email without Interrupts. To optimize the 3/4G connection the SIMswitcher with 28 SIMslots choose the best network per location based on signal strength, bandwidth and costs. And when a WiFi hotspots becomes available, the SigQ switch immediately to synchronize all stored data. The web interface allows the operator to configure local mobile Telco contracts and data-plans. Usage statics and reporting are available to manage bandwidth and control costs.



Specifications

Mobile Networks (SIM Switching)

- GPRS/EDGE/UMTS/HSDPA/LTE
- Roaming Control
- 2 x 28 SIM slots
- SIM selection; Usage based, Location based

WLAN (uplink)

- 802.11a/b/g/n support
- Support for login-based hotspots

Satellite

- Newtec modem
- SatLink 1910 modem

GPS

- Built-in GPS receiver

Antenna connectors

- 3G/4G : N-F connector
- WiFi : N-F connector
- GPS : N-F connector

Performance Enhancing Proxy

- Latency mitigation and caching
- TCP over Satellite
- Traffic shaping

Management

- Web-based configuration and monitoring
- LCD for quick diagnostics

Maintenance

- Downloadable firmware updates
- Firmware updates through USB
- Remote access
- E-mail based control and alerting

Internet Protocol features

- Stateful firewall, QoS, NAT, NAPT, DHCP, Tunneling, ZeroConf (Rendezvous/Bonjour), IPv4, UPnP, TCP-Window size control

Application protocols

- SMTP, HTTP, SOAP, HTTPS, POP, IMAP and SSH

Casing & interfaces

- Rack-mount 19 inch; 2U; half- the-depth
- 2 x UTP Ethernet
- 1 x USB 2.0
- 1 x RS232 DB9
- Input voltage 100-240 V AC, 50/60 Hz
- Operating temperature -20°C to +60°C

Customization

Security and Encryption

SSL, x509, IPsec, PPTP, PKI, PGK/GPG, S/MIME

Extra uplink connections

- Other satellite modems

Telemetry

- Temperature
- Serial / I2C
- Siemens S7 / GE Fanuc integration
- Anti-tamper monitoring
- GPS Track & Trace

Casing

- Waterproof for outside mounting in various classifications IP65, IP66, IP67 or IP69
- Automotive, chemicals resistant or ruggedized versions for tough environments
- Split antenna setup for WLAN, 3G/4G for easy mounting

Centralized Management

- Centralized monitoring via a dashboard
- SMS based control and alerting
- Captive status page

Virtualized Uplink

- Persistent virtual connection
- Priority based link selection (manual / automatic)

Distributor or dealer: